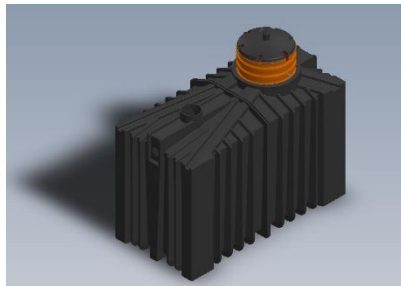
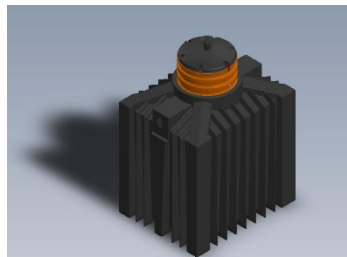
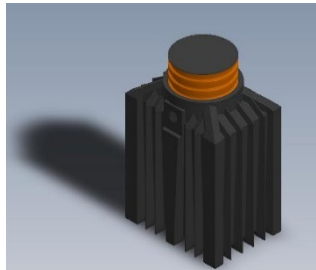


ClearFox®-Clarifier



The ClearFox® Lamella Clarifier is a non-pressurized system. Its primary application occurs after biological treatment for the removal of secondary sludge. However, water containing solids can also be clarified after chemical treatment. The water laden with solids is pumped through an inlet pipe or flows by gravity into the inlet of the Inclined Settler, where it is directed downwards. Below the lamella pack, the flow reverses, and the water flows upward through the lamellae. The solids (heavier than water) settle on the lamellae in the counterflow direction.

The clarified water continues to flow upwards and over a special overflow weir to the outlet. The solids slide down along the lamellae and accumulate in the sludge hopper, which ends in a pump sump. Depending on the subsequent process steps, the sludge can be discharged continuously or discontinuously.

Depending on the requirements, the Inclined Settler is completely installed in a PE tank of the desired size. The inlet area also consists of a seamless PE sump. From there, the sludge is pumped out with a sludge pump (optional), either with a submersible pump (hanging on a rope directly in the sludge sump) or by connecting a sludge pump for dry installation outside the tank to a sludge outlet opening (threaded connection on the tank side near the bottom with a submerged lining).

We offer 3 different tank sizes and lamella packages, depending on the application and/or flow rate.



- **optional** With an externally horizontal circumferential steel frame for freestanding bottom installation of the tank
- Material of the steel frame: 80 mm x 40 mm (internal reinforcement for underground installation is standard)
- **optional** access dome shaft to adjust the entry opening above ground level for underground tank installation.
- **optional** sludge discharge connection (DN 25 for connection of a dry-installed pump)
- **optional** with pump (submersible motor or dry installation), flow rate approximately 0.5 l/s - 1.0 l/s
- Inlet/outlet connections, DN 100 at 140 cm above the ground
- Water depth approximately 1.40 m

Geschäftsführer:
Dipl.Ing.(FH) Wolfgang U. Pöhl
Registergericht Bayreuth HRB 4726
USt.-IdNr.: DE259224458

PPU Umwelttechnik GmbH
Carl-Kolb-Str. 6,
95448 Bayreuth,
Germany
Tel. 0921 / 150 63 990,
Fax 0921 / 150 63 999,
E-Mail: info@clearfox.com
www.clearfox.com

Bankverbindung:
HypoVereinsbank Bayreuth
IBAN DE 8877 3200 7200 2542 4794
BIC: HYVEDEMM412

Technical Data:

	CI 1250	CI 2250	CI 3500
Tank:	1250 l Tank	2250 l Tank	3500 l Tank
Measures: (l, w, h) in cm (with side frame)	90/122/171 (106/138/171)	154/122/171 (170/138/171)	243/122/171 (259/138/171)
Base area:	1,25 m ²	2,25 m ²	3,5 m ²
Transport weight:	150 kg	190 kg	250 kg
Max. operational weight:	1300 kg	2300 kg	3550 kg
Inlet connection by gravity or feed pump pressure line:	DN 100	DN 100	DN 100
Outlet connection by gravity:	DN 100	DN 100	DN 100
Feeding Pump secondary sludge: (optional)	Sludgewater pump with 1" connection	Sludgewater pump with 1" connection	Sludgewater pump with 1" connection
Access via:	Lid (60 cm diameter)	Lid (60 cm diameter)	Lid (60 cm diameter)



Geschäftsführer:
Dipl.Ing.(FH) Wolfgang U. Pöhl
Registergericht Bayreuth HRB 4726
USt.-IdNr.: DE259224458

PPU Umwelttechnik GmbH
Carl-Kolb-Str. 6,
95448 Bayreuth,
Germany
Tel. 0921 / 150 63 990,
Fax 0921 / 150 63 999,
E-Mail: info@clearfox.com
www.clearfox.com

Bankverbindung:
HypoVereinsbank Bayreuth
IBAN DE 8877 3200 7200 2542 4794
BIC: HYVEDEMM412

Application

Clarifier for biological fixed-bed processes, aquaculture, rainwater

Modul	CI1250/1,0	CI2250/2,5	CI3500/5,0
Size	1250 l	2250 l	3500 l
Flowrate (m³/h)	1,0	2,5	5,0
Base area (m²)	2,6	6,87	13,46
Inclination of internal Lamellas	60°		

Clarifier for highly loaded biological fixed-bed processes, flocculated water

Module	CI1250/0,5	CI2250/1,0	CI3500/1,5
Size	1250 l	2250 l	3500 l
Flowrate (m³/h)	0,5	1,0	1,5
Base area (m²)	1,82	4,81	9,4
Inclination of internal Lamellas	60°		



Benefits:

- fast startup, cost saving in installation, small footprint
- modular system, adaptable at every application
- predesigned acc. ATV/DWA guidelines WW-treatment
- industrial as well as municipal wastewater clarifying
- high performance with high quality; Made in Germany
- tank system approved by EN 12566 and ISO 9001/3